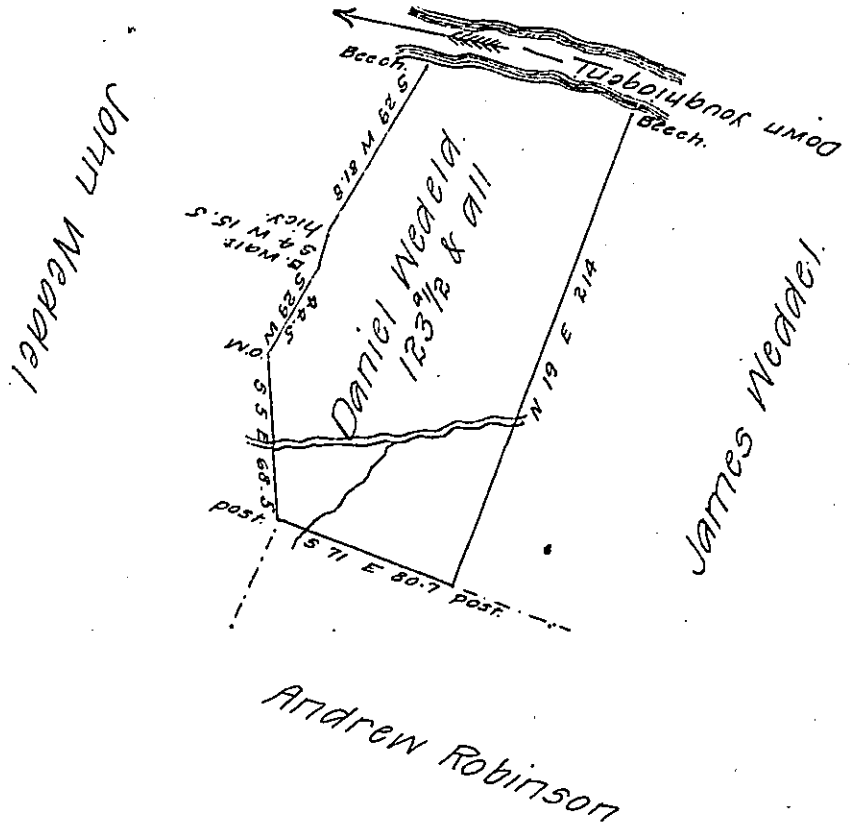


P-18-349

River Courses  
 N 72° W 18.5  
 N 79 W 46.7  
 N 83 W 28  
 -----  
 93.2



Situate in Elizabeth township Allegany County formerly  
 Rostraver township Westmoreland County & Surveyed the  
 2<sup>d</sup> day of April 1787 In pursuance of a Warrant dated the  
 17<sup>th</sup> day of December 1784.

P-Alexander McGlean

To Daniel Brodhead Esquire Deputy  
 Surveyor General.

IN TESTIMONY that the above is a copy of the original remaining on file in  
 the Department of Internal Affairs of Pennsylvania, made  
 conformably to an Act of Assembly approved the 16th day of  
 February 1833, I have hereunto set my hand and caused  
 the Seal of said Department to be affixed at Harrisburg,  
 this eighth day of June 1907.

Henry Houck  
 Secretary of Internal Affairs.